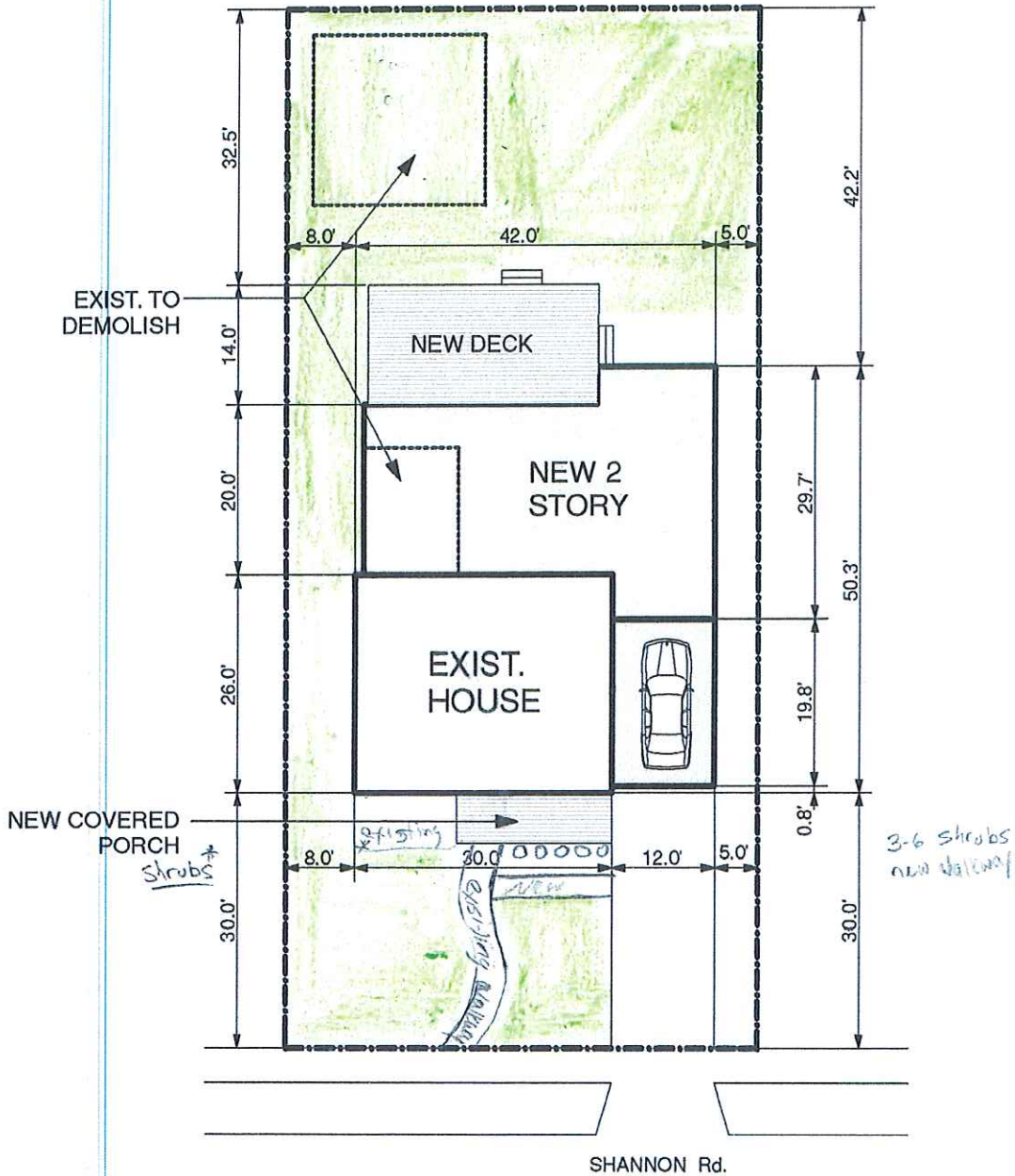


Since our move to Cleveland Heights over a decade ago, our family has grown, making our living quarters tight. The additional bedrooms and living area will enable our family to be adequately accommodated in our home. We would like to attach a one car garage to our house. This will allow greenspace for our children to play in, which will be greatly reduced should we need to maintain the current 20x20 structure. In addition, it will enable use a safer and more practical use of the garage especially in inclement weather. As such, we respectfully request this accommodation.

Landscape & Site Plan



123

55
SCHEMATIC SITE PLAN

SCALE: 1" = 20'-0"