

Proposed Tenant for 2255 Lee Rd. Cleveland Hts., Ohio

Name and Description of Organization (tenant)

The SGI-USA (Soka Gakkai International-USA, Buddhist Association for Peace, Culture, and Education) is part of an International Organization with facilities in more than 100 countries worldwide.

Facility Activities

SGI members gather to exchange ideas, hopes, challenges, and experiences of their Buddhist faith and practice.

The facility will be used to accommodate a business office for the local director and a small staff and will also be used to provide a venue for meetings consisting of as few as 3-4 people as well as scheduled larger assemblies consisting of up to 150 persons. A small bookstore is part of the facility which provides for the sale and distribution of educational media for members and the public.

Hours of Operation and Projected Occupancy Loads

The facility will normally be open to members and the public

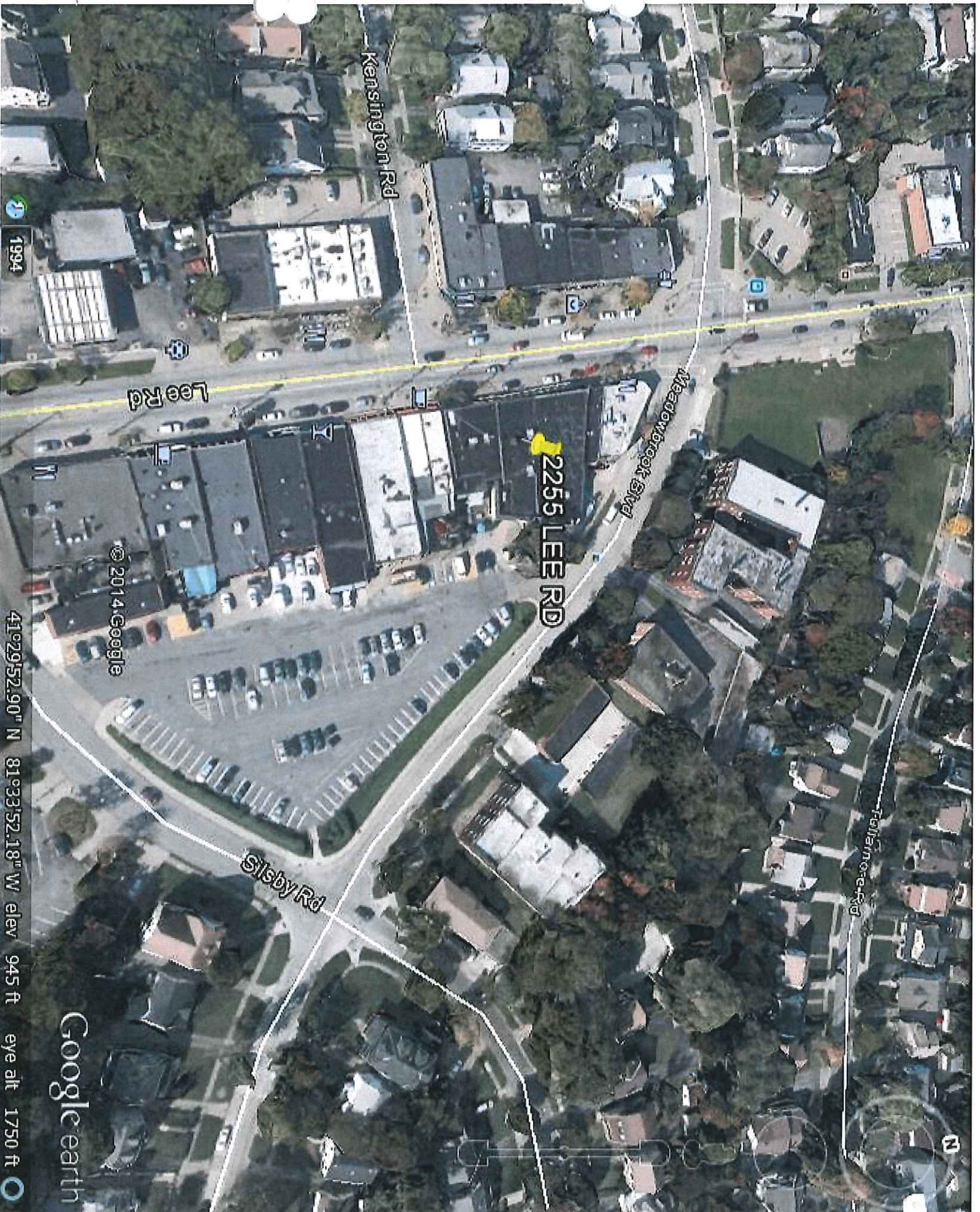
Mon thru Fri: 6PM and 9PM. 25pers.+/-

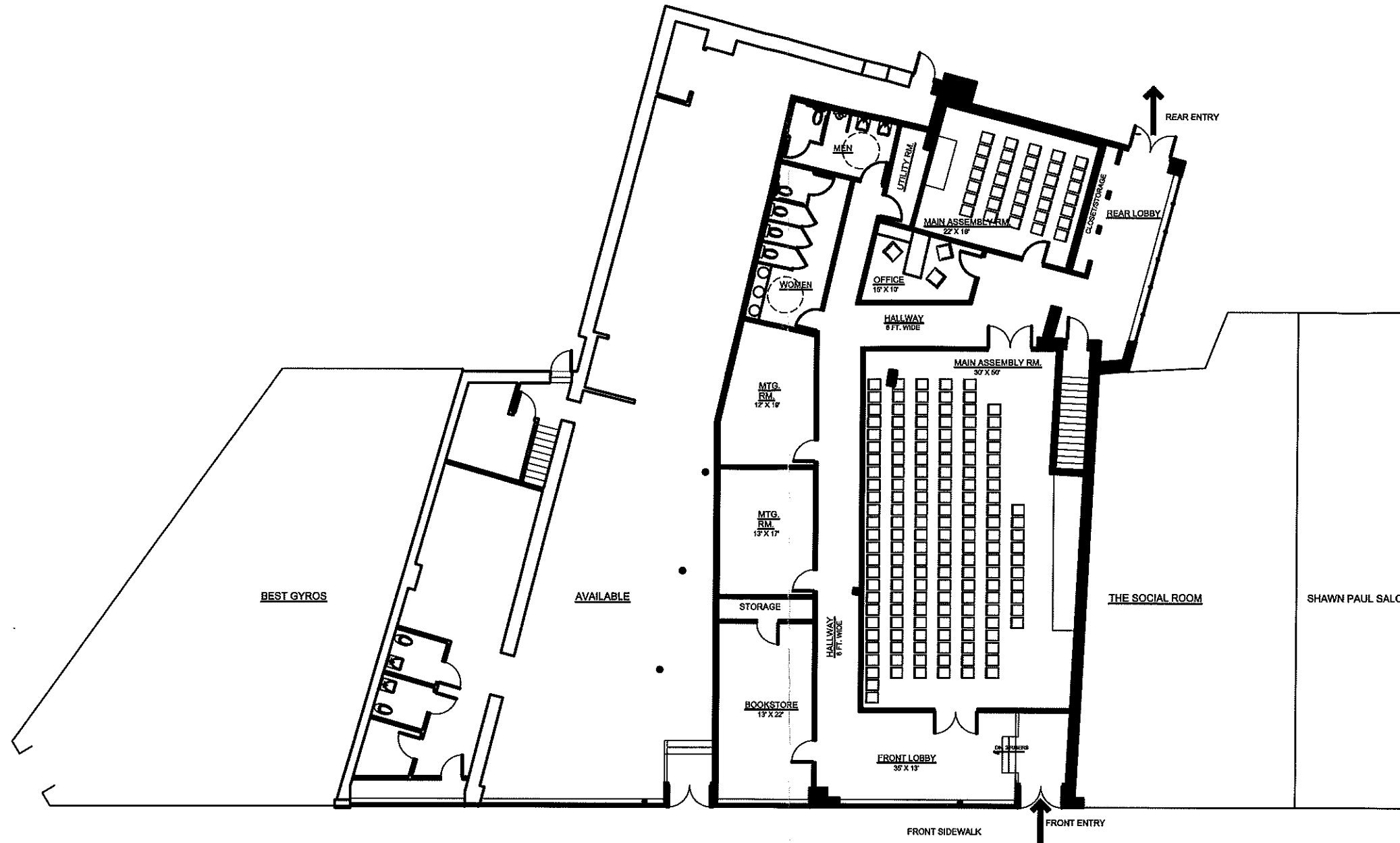
Sat: 8AM thru 9PM 25pers +/-

Sun: 8AM thru 5PM varies (heavier in the 10AM to 12AM time period)

Additional Information

Additional information about the organization can be found on the Soka Gakkai International website.





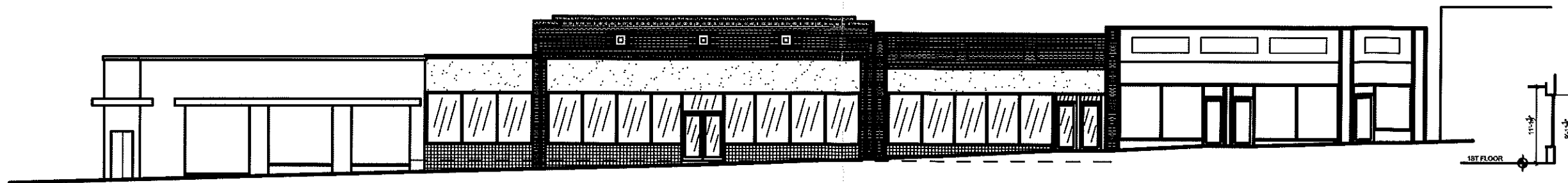
SGI-USA
 2255 LEE RD.
 CLEVELAND HTS., OHIO

5,000 S.F. LEASE SPACE
 DESIGN 1 11-05-14



PRELIM. FLOOR PLAN
 FAY ARCHITECTURE
 216-852-1513 JACKFAYARCHITECTURE1@GMAIL.COM

Bk3 PROPERTIES, LLC



FRONT ELEVATION (LEE RD.)

